



THE COLLEGE OF
OPTOMETRISTS

Stage Two

Overarching case scenario 1

ETHNIC BACKGROUND Caucasian, male aged 18 years.

OCCUPATION AND HOBBIES 'A' level student wants to study medicine : non-driver: cinema, socialising, reading

PRESENTING SYMPTOMS AND HISTORY Frontal headaches towards late afternoon/early evening over past few weeks, which disappear after sleep. Currently studying for exams which are in 1 months time. Vision good for distance and near. Never worn spectacles. Had twig in eye (can't remember which) aged 6 years - treated by hospital, no long-term effects. Paternal grandmother has cataracts.

GENERAL HEALTH AND MEDICATION good, no medication. Mother has high blood pressure.

PRESENT Rx, CENTRATION AND ACUITIES none

PD/NCD 61/57 at 33cms

VISION RE: 6/5 LE: 6/5

PINHOLE VISION RE: 6/5 LE: 6/5

REFRACTION RE: +0.50/+0.25 x 180; LE: +0.50

VA Distance RE: 6/5 LE: 6/5

Near RE: N5 LE: N5

ACCOMMODATION RE: 12D LE: 12D Binoc 12D

BINOULAR STATUS without Rx Cover Test

Distance 4 prism esophoria

Near 12 prism esophoria , slow recovery

With Rx

Distance Maddox Rod 2 prism esophoria

Near Maddox Wing 10,1esophoria, slow recovery

Fixation Disparity Near Mallett Unit RE 2 prism base out or binoc +0.50 DS eliminates slip.

MOTILITY full, no diplopia

CONVERGENCE NPC = 8cm

PUPIL REACTIONS direct, consensual and near reflexes present

FUNDUS EXAMINATION see attached

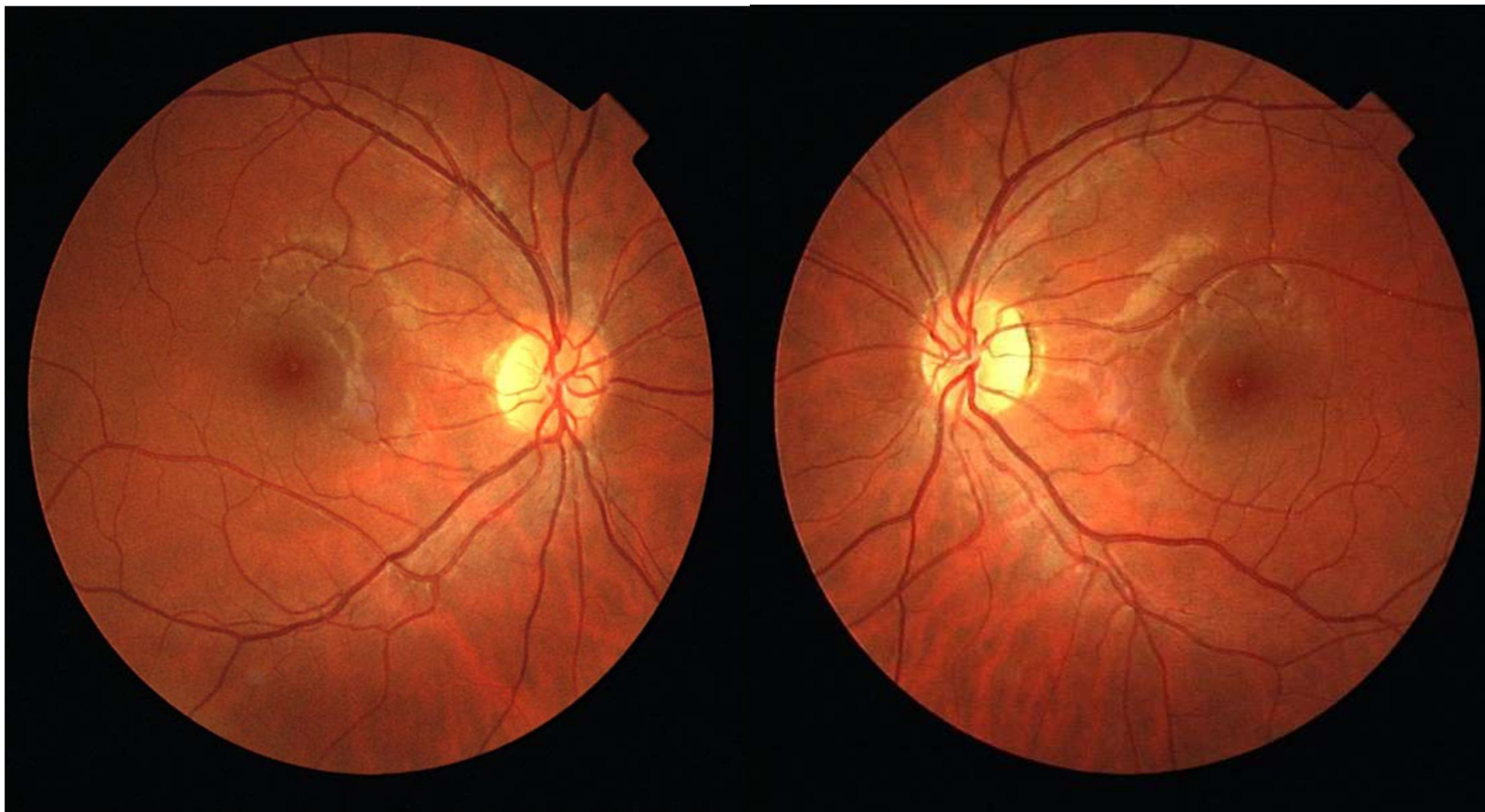
FIELDS see attached

IOP RE: 15 mmHg LE: 14 mmHg AO NCT 9.30am

EXTERNAL EYE EXAMINATION see attached

COLOUR VISION see attached

Fundus Image

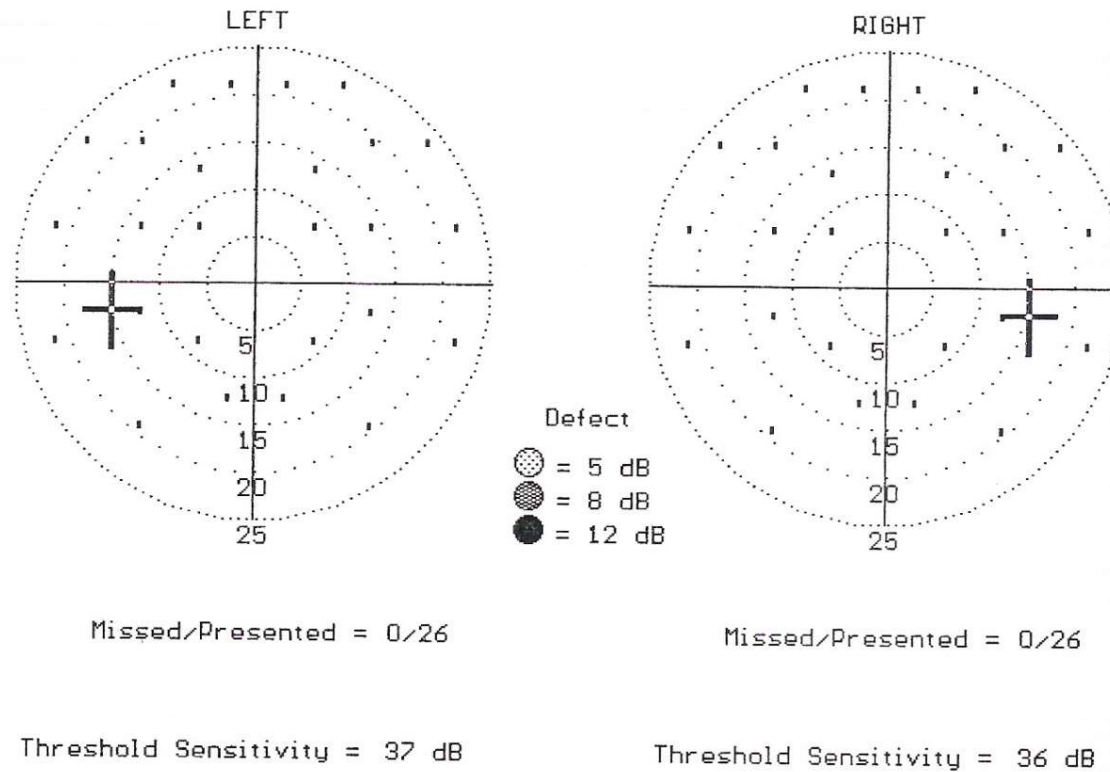


External Eye LE (RE similar)



Field RE & LE

Multiple Stim Supra-thresh Central Field Test



Colour Vision (Binocular)

ISHIHARA TEST SCORE SHEET (38-PLATE EDITION, 1979)

NAME:

DATE:

PLATE	SCORE	NORMAL	DEFICIENT	TOTAL, CN/ WEAK	ANOPIA	PROT ANOMALY	ANOPIA	DEUTER ANOMALY
1	12	12	12	12	12	12	12	12
2	3	8	3	-				
3	8	6	5	-				
4	70	29	70	-				
5	35	57	35	-				
6	2	5	2	-				
7	5	3	5	-				
8	17	15	17	-				
9	21	74	21	-				
10	-	2	-/X					
11	-	6	-/X					
12	-	97	-/X					
13	-	45	-/X					
14	-	5	-/X					
15	-	7	-/X					
16	-	16	-/X					
17	-	73	-/X					
18	-	-	5	-				
19	2	-	2	-				
20	45	-	45	-				
21	7-	-	73	-				
22	6	26			6	(2)6	2	2(6)
23	2	42			2	(4)2	4	4(2)
24	5	35			5	(3)5	3	3(5)
25	6	96			6	(9)6	9	9(6)

NOTES: - no numeral read X incorrectly read A(B) A clearer than B